



**CSE: KUYA | OTCQB: KUYAF | FRA: 6MR1**

## Share Structure

Shares Outstanding:	93,360,399
Fully Diluted:	130,464,273
Market Capitalization:	~C\$21.4M*

## Significant Shareholders

Management:	12.1%
Kuya Advisory Team:	6.6%

# Building the Next High - Margin Silver Mining Company

## Kuya's Bethania Overview:

- Bethania Mine is a high-grade silver project with historic production grades of ~650 g/t Ag eq
- 4,500+ ha district-scale land package with multiple high priority targets including the Carmelita Prospect
- Maiden Resource, from 5,000m of drilling and underground sampling, announced in January 2022:
  - Indicated resources of 6,090,288 oz Ag eq at an average grade of 469 g/t Ag eq contained in 404,000 tonnes
  - Inferred resources of 8,303,361 oz Ag eq at an average grade of 369 g/t Ag eq contained in 700,000 tonnes
  - 63% of Indicated Silver Equivalent Resource Estimate Located Above Historical Production Adit (4670 Level)
  - Resource model extends to an average depth of approximately 200m
- New Santa Elena vein discovery of 91.1 oz/t Ag - 600m along strike (at surface)
- 100% ownership - No royalties or streams

## Expanding and Optimizing the Bethania Silver Mine in Peru – A Commitment to Low-Cost, Sustainable Silver Mining.

Kuya is a publicly-traded, silver-focused mining company that owns the Bethania Project, which includes the Bethania Silver mine, located in Central Peru. The Bethania mine was in production until 2016, toll-milling its high - grade ore at various other concentrate plants in the region. In 2024, the Company will commence toll milling operation through the nearby CMSV Plant located ~20km by road.

**~650 g/t Ag eq**  
*Historic Production Grade*

**4,500+ ha**  
*District-Scale Land Package*

\* As of February 2nd, 2024





CSE: KUYA | OTCQB: KUYAF | FRA: 6MR1

## Share Structure

Shares Outstanding:	93,360,399
Fully Diluted:	130,464,273
Market Capitalization:	~C\$21.4M*

## Significant Shareholders

Management:	12.1%
Kuya Advisory Team:	6.6%

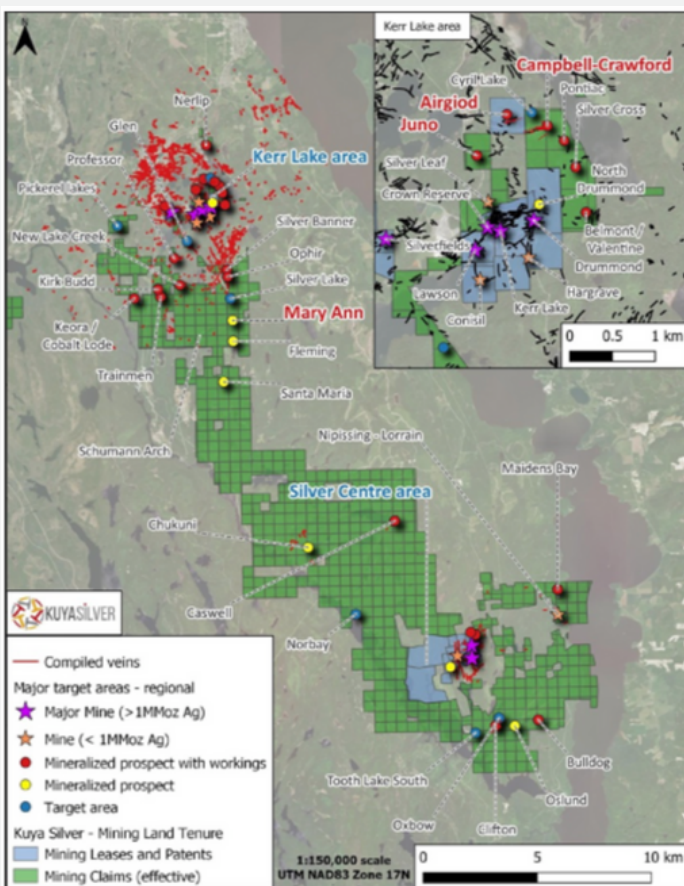
## Future Growth - Silver Kings Project, Ontario (Canada)

- The 18,000+ hectare land package in NE Ontario is located within the historic Cobalt, Ontario silver mining district.
  - Approximately 1/6 of total silver production from the Cobalt and Silver Centre mining camps was produced from this consolidated property (96 / 550MM oz).

- Kuya has identified dozens of exploration targets throughout the Silver Kings Project area.

## 2 Blind Discoveries: Campbell-Crawford and Airgiod

- Bonanza grade silver mineralization at the Campbell-Crawford Area.
- Angus Vein intersections include:
  - 15,372 g/t silver over 3.34m (see image)
  - 2,424 g/t silver over 2.49m
  - 12,200 g/t silver over 0.40m
- A second blind discovery was made at the Airgiod target area, 250 m northwest of the original Campbell-Crawford intersection.
  - The new vein was intersected in an identical setting to the Angus vein at the Campbell-Crawford target area.



## Angus Vein Discovery

Campbell-Crawford Area

15,372 g/t Ag over 3.34m

Discovery Hole

\* As of February 2nd, 2024